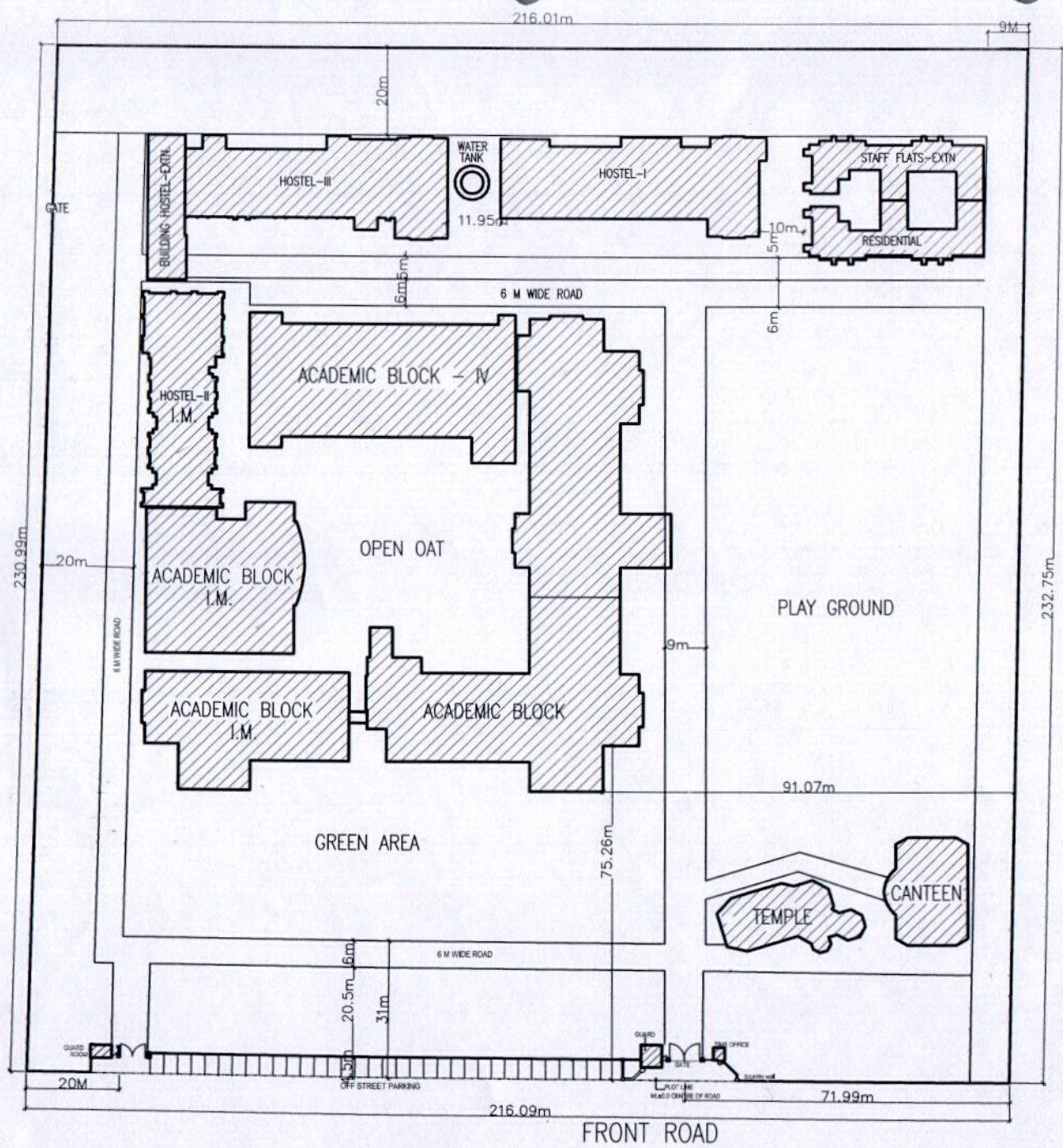




The drawing with all its contents is the sole intellectual property of the I.T.S. Institute, Greater Noida, U.P. Copying of this drawing or part thereof for use in any form whatsoever without the written permission is prohibited.



Schedule of Areas

S.No.	Item	Permissible	Proposed
		Area in Sqft.	Area in Sqft.
1	Total Plot Area = 50089.76 Sqm.		
2	Ground Coverage 30%	15026.928	23.21% 11627.11
3	FAR 130	65116.688	109.09% 54643.06

Proposed Ground Coverage

- Academic Block = 6828.29 sqmt.
- Hostel Block-I = 1074.280 sqmt.
- Hostel Block-II = 726.270 sqmt.
- Hostel Block-III = 1295.056 sqmt.
- Canteen Block = 380.876 sqmt.
- Residential Block = 733.414 sqmt.
- Security guard rm = 43.885 sqmt.
- ESS = 121.091 sqmt.
- Temple = 353.100 sqmt.
- WATER TANK = 70.850 sqmt.

Total Area = 11627.11 sqmt.

Proposed FAR

- Academic Block = 33765.032 sqmt.
- Hostel Block-I = 4278.424 sqmt.
- Hostel Block-II = 4372.443 sqmt.
- Hostel Block-III = 7239.287 sqmt.
- Canteen Block = 380.876 sqmt.
- Residential Block = 3032.896 sqmt.
- Security guard rm = 43.885 sqmt.
- ESS = 121.091 sqmt.
- Temple = 353.100 sqmt.
- Water Tank = 70.850 sqmt.

Total Area = 54643.06 sqmt.

AFTER 2009:

	Area Constructed (in Sq. Ft.)
Building	
- Building New Academic Block - IV	56100
- Building Staff Flats- Extn	15250
- Building Hostel - II	Minor addition in Constructed
- Building Hostel - Extn	16940
Total	

L. Rayana
 Director
 ITS Engineering College
 Greater Noida

PROJECT

ENGINEERING COLLEGE FOR I.T.S.

PLOT NO.- 46, KP-III, AT GREATER NOIDA.

ARCHITECT'S SIGN APPLICANT'S SIGN

TITLE

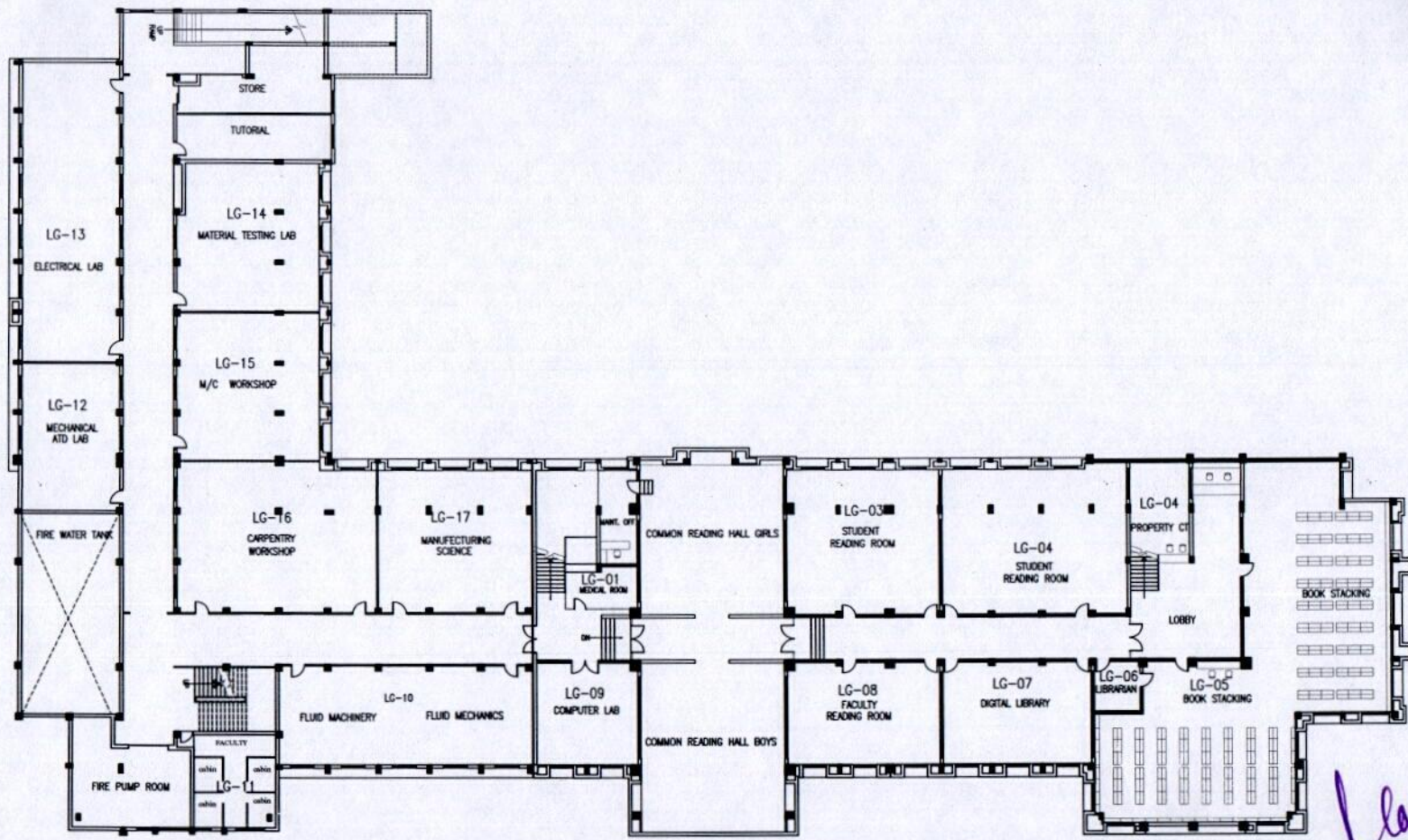
SITE PLAN

DRG.NO.

N.T.S. 09-10-14 GR./ENGIN.

SCALE DATE JOB NO.

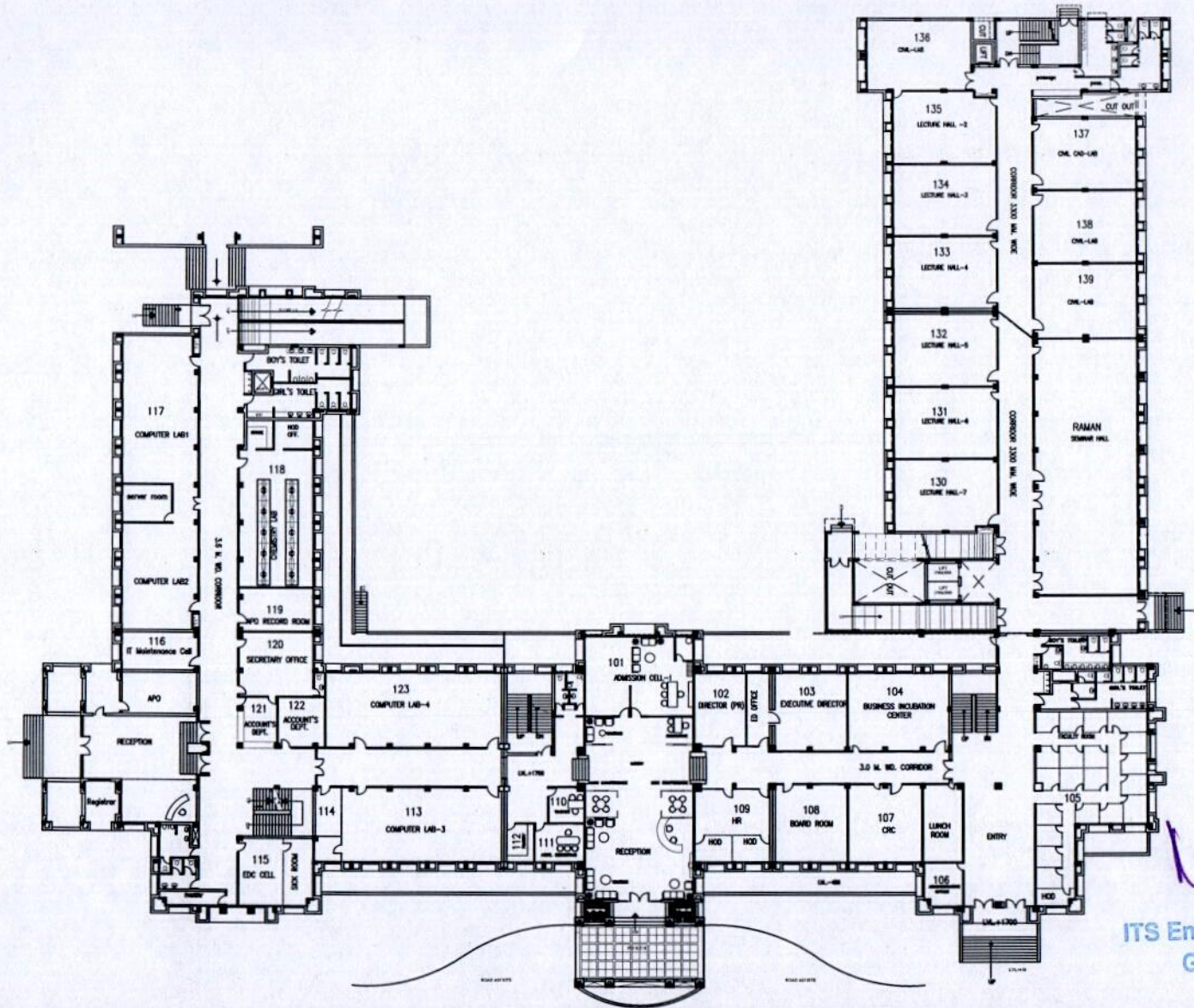
ARCHITECT
 bds Sharma CONSULTING pvt.ltd.
 C-1/5, Basement, Safdarjung Development Area
 Adj. Aurbind Market, New Delhi-110016
 PH : 26563781, 26522528
 email - bdsarchitect@gmail.com




Rayans
Director

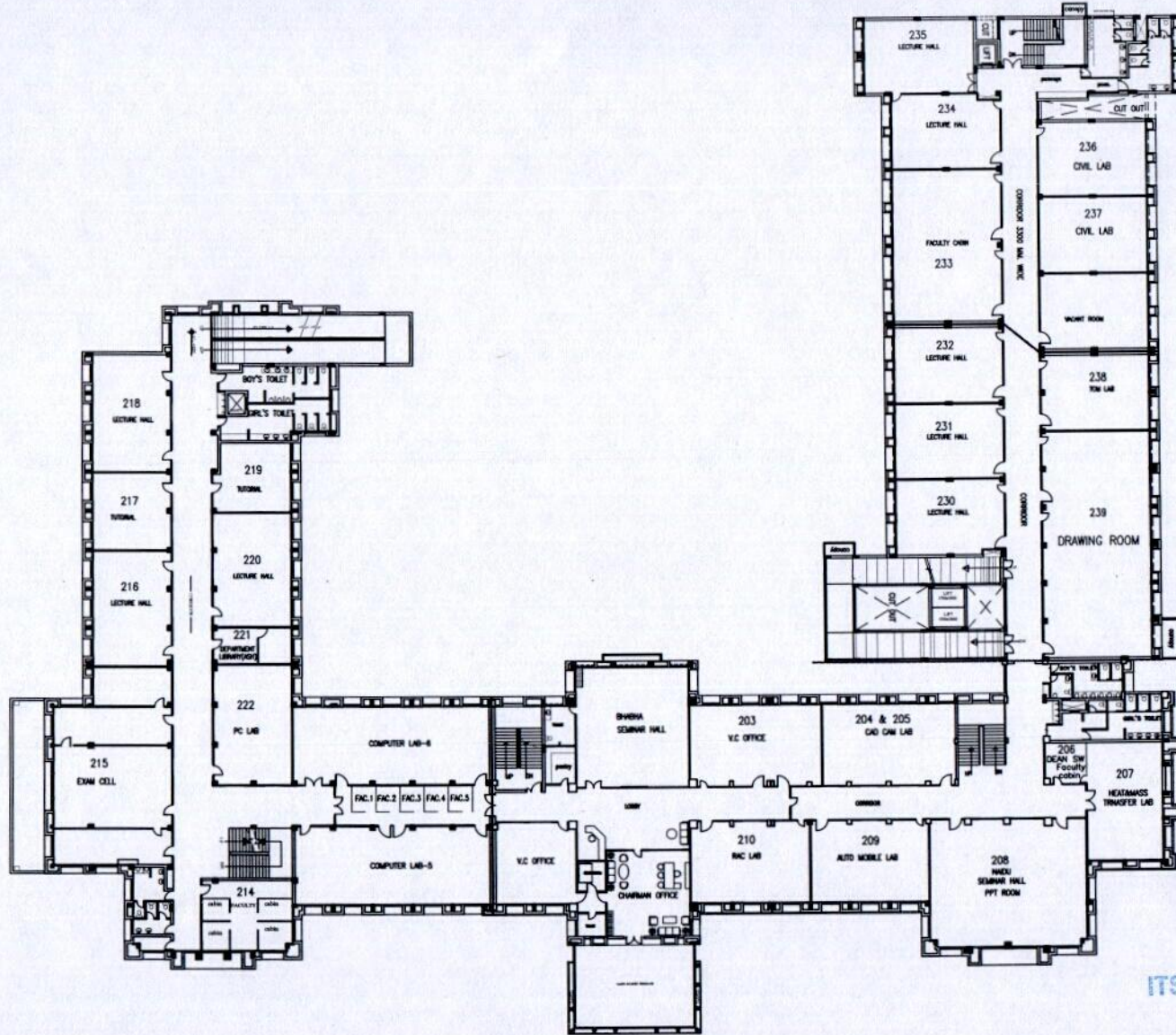
ITS Engineering College
Greater Noida

L. GROUND FLOOR LAYOUT



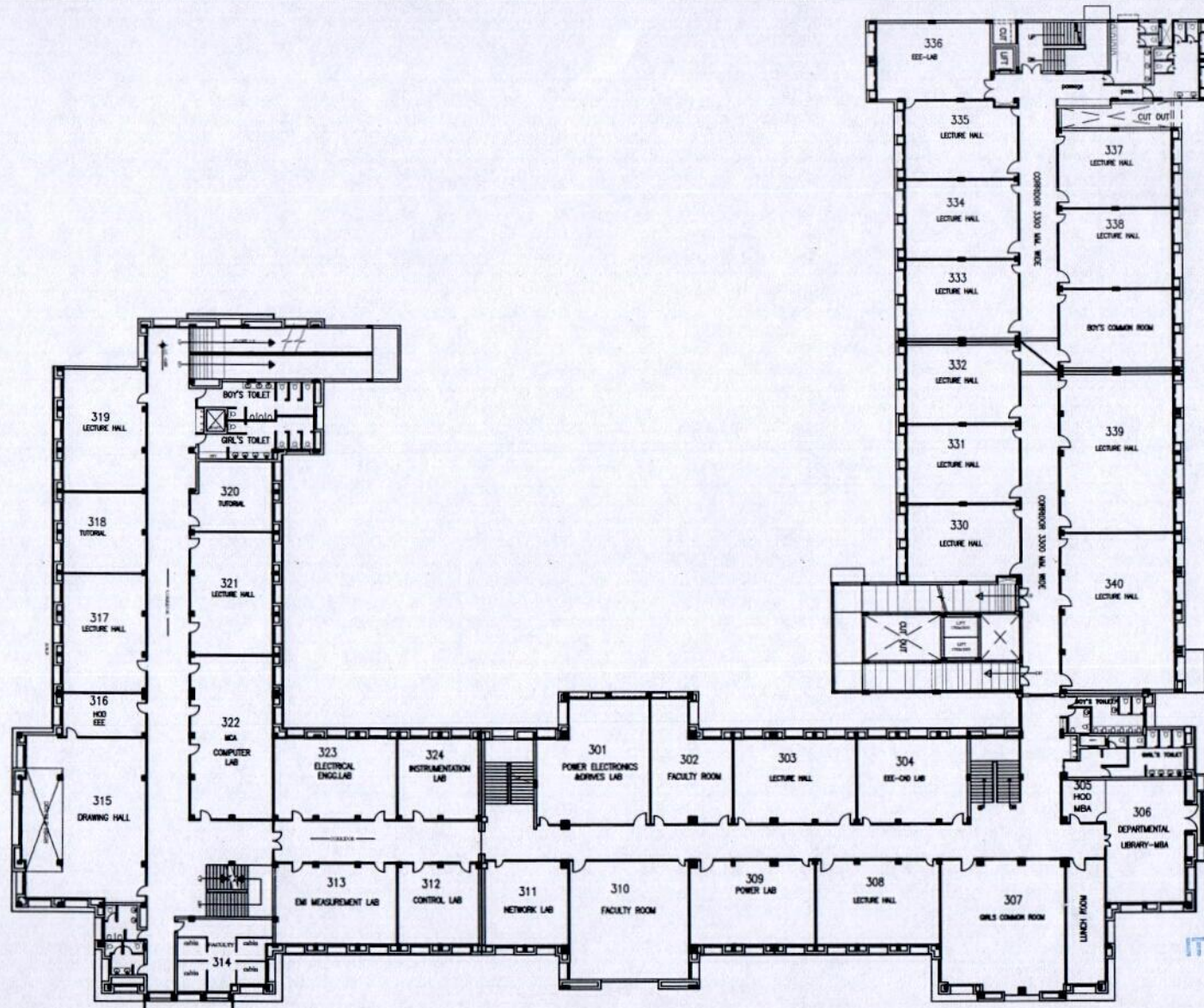

 Director
 ITS Engineering College
 Greater Noida

GROUND FLOOR LAYOUT



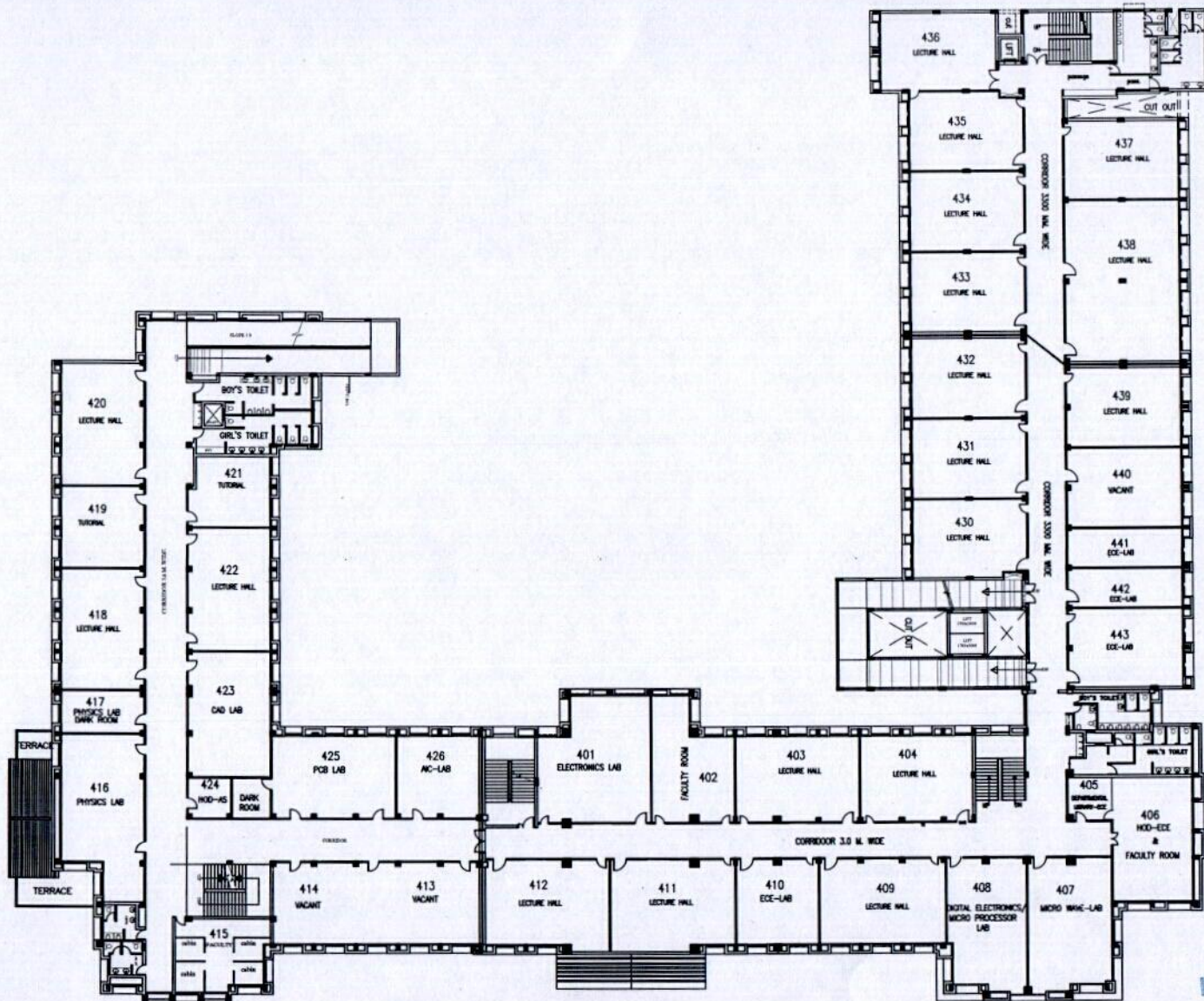
Rayan
 Director
 ITS Engineering College
 Greater Noida

FIRST FLOOR LAYOUT



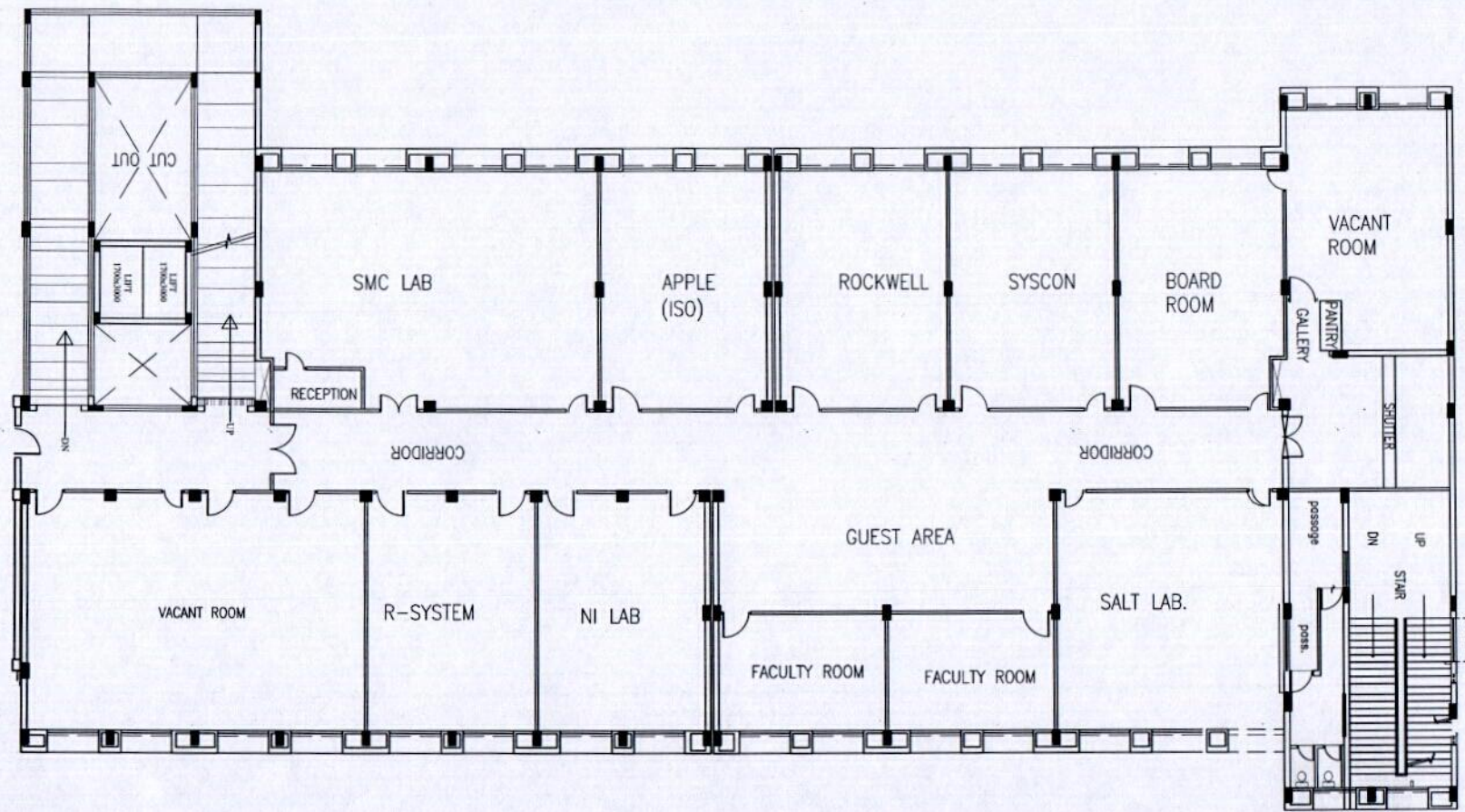
Laypu
 Director
 ITS Engineering College
 Greater Noida

SECOND FLOOR LAYOUT



K. Jayas
 Director
 ITS Engineering College
 Greater Noida

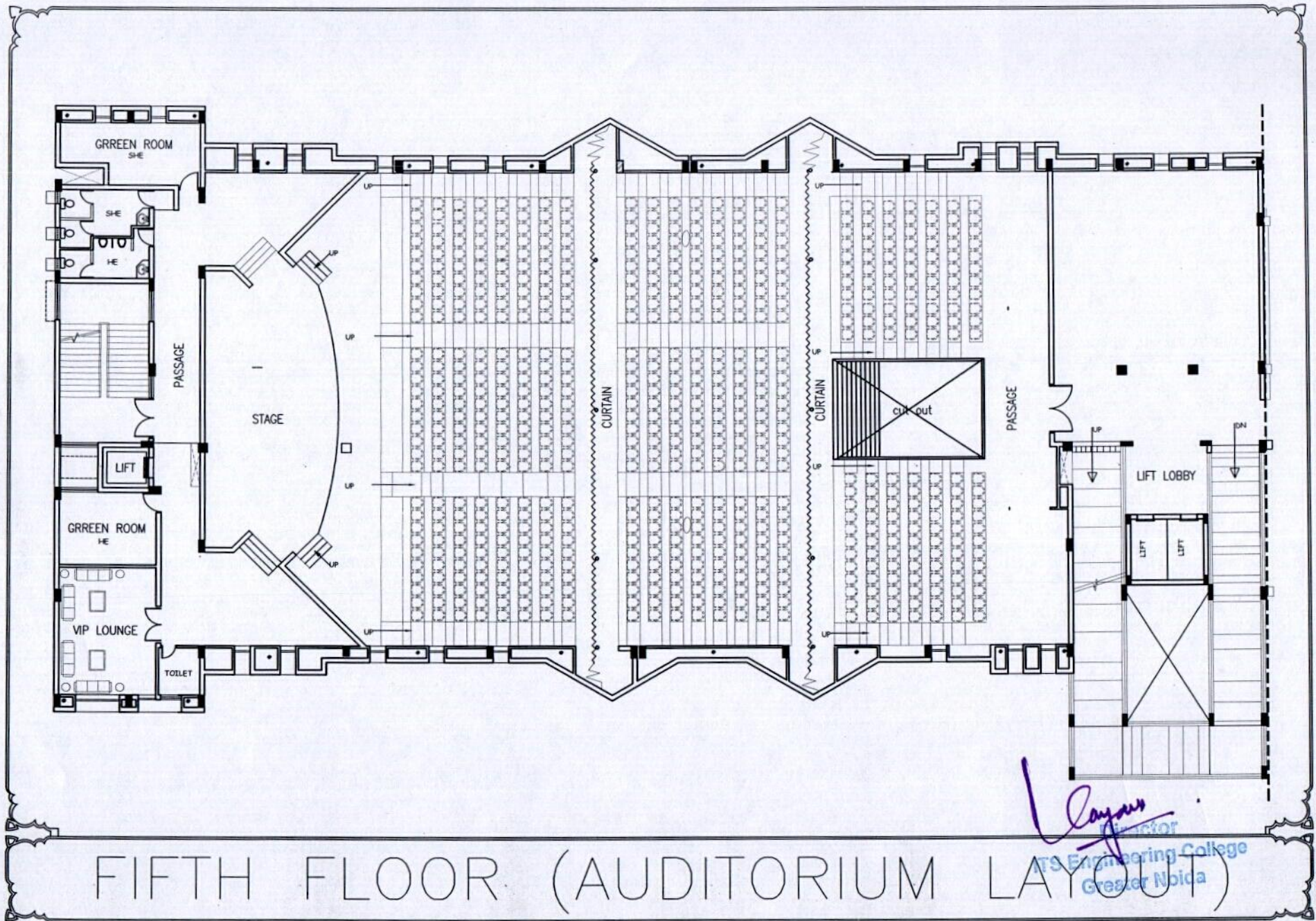
THIRD FLOOR LAYOUT



Rayans
Director

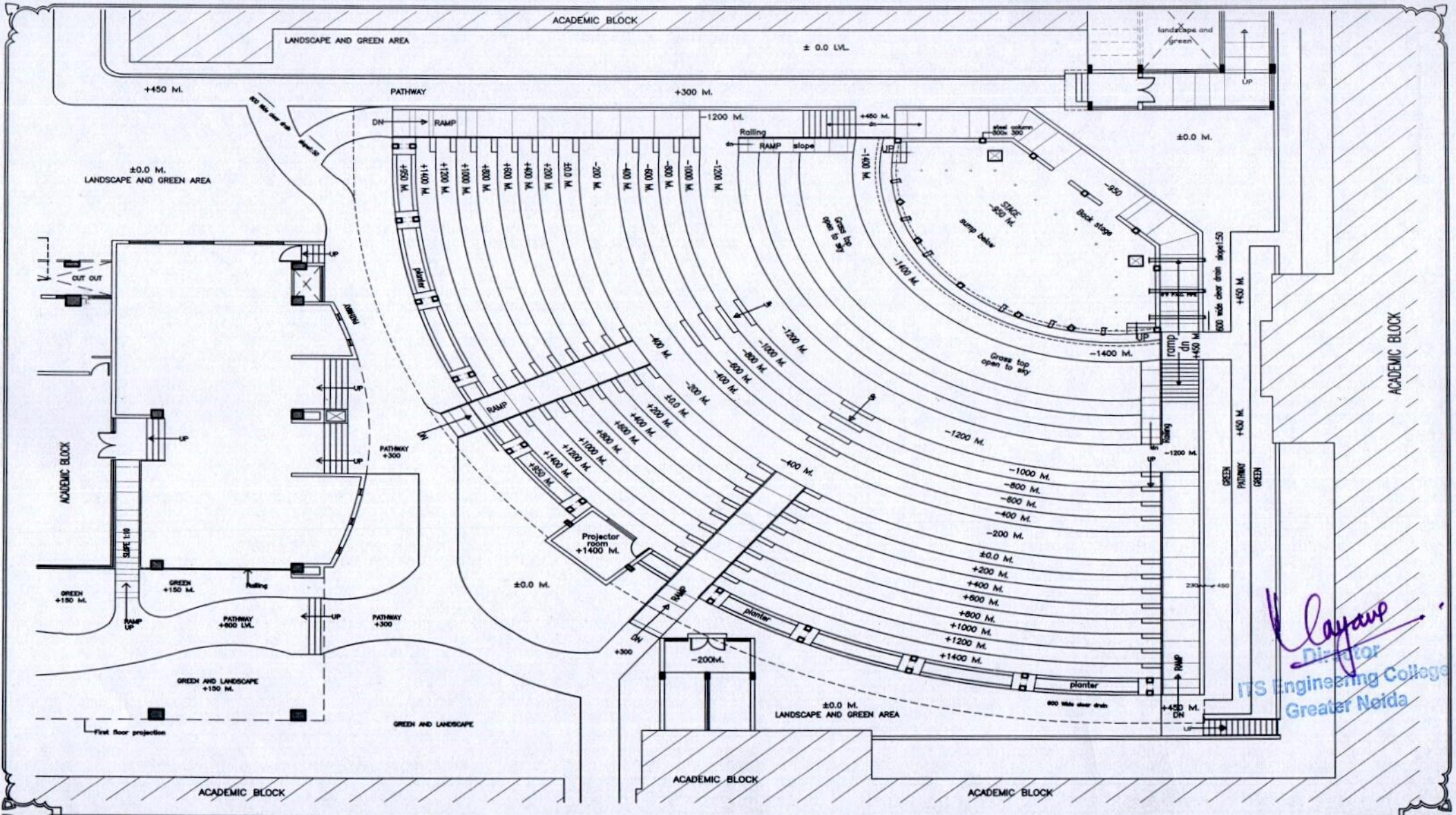
FOURTH FLOOR LAYOUT

TS Engineering College
Greater Noida



FIFTH FLOOR (AUDITORIUM LAYOUT)

Signature
 Lecturer
 JTS Engineering College
 Greater Noida



GROUND FLOOR (AMPHITHEATRE LAYOUT)